

29-January-2023 (Evening Batch) : JEE Main Paper

PHYSICS

Section - A (Single Correct Answer)

1. Substance A has atomic mass number 16 and half life of 1 day. Another substance B has atomic mass number 32 and half life of $1/2$ day. If both A and B simultaneously start undergo radio activity at the same time with initial mass 320 g each, how many total atoms of A and B combined would be left after 2 days.

(A) 3.38×10^{24} (B) 6.76×10^{24} (C) 6.76×10^{23} (D) 1.69×10^{24}

2. At 300 K, the rms speed of oxygen molecules is $\sqrt{\frac{\alpha+5}{\alpha}}$ times to that of its average speed in the gas.

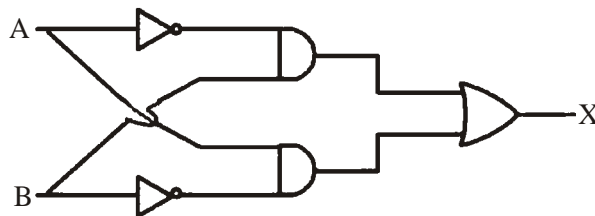
Then, the value of α will be (used $\pi = \frac{22}{7}$)

(A) 32 (B) 28 (C) 24 (D) 27

3. The ratio of de-Broglie wavelength of an α -particle and a proton accelerated from rest by the same potential is $\frac{1}{\sqrt{m}}$, the value of m is

(A) 4 (B) 16 (C) 8 (D) 2

4. For the given logic gates combination, the correct truth table will be



(A)

A	B	X
0	0	1
0	1	0
1	0	0
1	1	0

(B)

A	B	X
0	0	0
0	1	1
1	0	1
1	1	0

(C)

A	B	X
0	0	1
0	1	0
1	0	1
1	1	0

(D)

A	B	X
0	0	0
0	1	1
1	0	1
1	1	1

5. The time taken by an object to slide down 45° rough inclined plane is n times as it takes to slide down a perfectly smooth 45° incline plane. The coefficient of kinetic friction between the object and the incline plane is

(A) $\sqrt{\frac{1}{1-n^2}}$ (B) $\sqrt{1-\frac{1}{n^2}}$ (C) $1+\frac{1}{n^2}$ (D) $1-\frac{1}{n^2}$

6. Force acts for 20 s on a body of mass 20 kg, starting from rest, after which the force ceases and then body describes 50 m in the next 10 s. The value of force will be :
- (A) 40 N (B) 5 N (C) 20 N (D) 10 N
7. A fully loaded boeing aircraft has a mass of 5.4×10^5 kg. Its total wing area is 500 m². It is in level flight with a speed of 1080 km/h. If the density of air ρ is 1.2 kg m⁻³, the fractional increase in the speed of the air on the upper surface of the wing relative to the lower surface in percentage will be ($g = 10$ m/s²)
- (A) 16 (B) 6 (C) 8 (D) 10
8. Identify the correct statements from the following:
- (A) Work done by a man in lifting a bucket out of a well by means of a rope tied to the bucket is negative.
- (B) Work done by gravitational force in lifting a bucket out of a well by a rope tied to the bucket is negative.
- (C) Work done by friction on a body sliding down an inclined plane is positive.
- (D) Work done by an applied force on a body moving on a rough horizontal plane with uniform velocity is zero.
- (E) Work done by the air resistance on an oscillating pendulum is negative.
- Choose the correct answer from the options given below:
- (A) B and E only (B) A and C only
- (C) B, D and E only (D) B and D only
9. An object moves at a constant speed along a circular path in a horizontal plane with centre at the origin. When the object is at $x = +2$ m, its velocity is $-4\hat{j}$ m/s. The object's velocity (v) and acceleration (a) at $x = -2$ m will be
- (A) $v = 4\hat{i}$ m/s, $a = 8\hat{j}$ m/s² (B) $v = 4\hat{j}$ m/s, $a = 8\hat{i}$ m/s²
- (C) $v = -4\hat{j}$ m/s, $a = 8\hat{i}$ m/s² (D) $v = -4\hat{i}$ m/s, $a = -8\hat{j}$ m/s²
10. A point charge 2×10^{-2} C is moved from P to S in a uniform electric field of 30 NC⁻¹ directed along positive x-axis. If coordinates of P and S are (1, 2, 0) m and (0, 0, 0) m respectively, the work done by electric field will be
- (A) 1200 mJ (B) 600 mJ (C) -600 mJ (D) -1200 mJ
11. The modulation index for an A.M. wave having maximum and minimum peak to peak voltages of 14 mV and 6 mV respectively is :
- (A) 1.4 (B) 0.4 (C) 0.2 (D) 0.6
12. The electric current in a circular coil of four turns produces a magnetic induction 32 T at its centre. The coil is unwound and is rewound into a circular coil of single turn, the magnetic induction at the centre of the coil by the same current will be :
- (A) 8T (B) 4T (C) 2T (D) 16T
13. With the help of potentiometer, we can determine the value of emf of a given cell. The sensitivity of the potentiometer is
- (A) directly proportional to the length of the potentiometer wire
- (B) directly proportional to the potential gradient of the wire
- (C) inversely proportional to the potential gradient of the wire
- (D) inversely proportional to the length of the potentiometer wire
- Choose the correct option for the above statements:
- (A) B and D only (B) A and C only (C) A only (D) C only

14. A scientist is observing a bacteria through a compound microscope. For better analysis and to improve its resolving power he should. (Select the best option)
- (A) Increase the wave length of the light
 (B) Increase the refractive index of the medium between the object and objective lens
 (C) Decrease the focal length of the eye piece
 (D) Decrease the diameter of the objective lens

15. Given below are two statements:

Statement I : Electromagnetic waves are not deflected by electric and magnetic field.

Statement II : The amplitude of electric field and the magnetic field in electromagnetic waves are related

to each other as $E_0 = \sqrt{\frac{\mu_0}{\epsilon_0}} B_0$

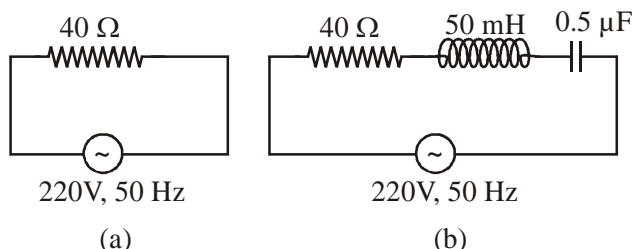
In the light of the above statements, choose the correct answer from the options given below:

- (A) Statement I is true but statement II is false (B) Both Statement I and Statement II are true
 (C) Statement I is false but statement II is true (D) Both Statement I and Statement II are false
16. Heat energy of 184 kJ is given to ice of mass 600 g at -12°C , Specific heat of ice is $2222.3 \text{ J kg}^{-1} \text{ }^\circ\text{C}^{-1}$ and latent heat of ice is 336 kJ/kg^{-1}
- (A) Final temperature of system will be 0°C .
 (B) Final temperature of the system will be greater than 0°C .
 (C) The final system will have a mixture of ice and water in the ratio of 5 : 1.
 (D) The final system will have a mixture of ice and water in the ratio of 1 : 5.
 (E) The final system will have water only.

Choose the correct answer from the options given below:

- (A) A and D only (B) B and D only (C) A and E only (D) A and C only

17. For the given figures, choose the correct options:



- (A) The rms current in circuit (b) can never be larger than that in (a)
 (B) The rms current in figure (a) is always equal to that in figure (b)
 (C) The rms current in circuit (b) can be larger than that in (a)
 (D) At resonance, current in (b) is less than that in (a)
18. The time period of a satellite of earth is 24 hours. If the separation between the earth and the satellite is decreased to one fourth of the previous value, then its new time period will become.
- (A) 4 hours (B) 6 hours (C) 12 hours (D) 3 hours
19. The equation of a circle is given by $x^2 + y^2 = a^2$, where a is the radius. If the equation is modified to change the origin other than (0, 0), then find out the correct dimensions of A and B in a new equation :

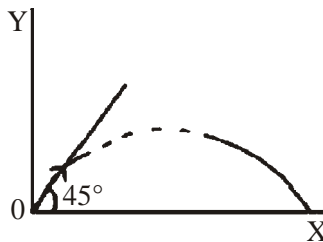
$$(x - At)^2 + \left(y - \frac{t}{B}\right)^2 = a^2. \text{ The dimensions of t is given as } [T^{-1}].$$

- (A) $A = [L^{-1} T]$, $B = [LT^{-1}]$ (B) $A = [LT]$, $B = [L^{-1}T^{-1}]$
 (C) $A = [L^{-1}T^{-1}]$, $B = [LT^{-1}]$ (D) $A = [L^{-1}T^{-1}]$, $B = [LT]$

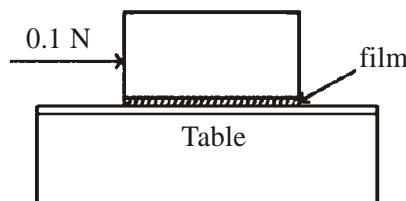
20. A square loop of area 25cm^2 has a resistance of 10Ω . The loop is placed in uniform magnetic field of magnitude 40.0 T . The plane of loop is perpendicular to the magnetic field. The work done in pulling the loop out of the magnetic field slowly and uniformly in 1.0 sec , will be
 (A) $2.5 \times 10^{-3}\text{ J}$ (B) $1.0 \times 10^{-3}\text{ J}$ (C) $1.0 \times 10^{-4}\text{ J}$ (D) $5 \times 10^{-3}\text{ J}$

SECTION - B

21. When two resistance R_1 and R_2 connected in series and introduced into the left gap of a meter bridge and a resistance of 10Ω is introduced into the right gap, a null point is found at 60 cm from left side. When R_1 and R_2 are connected in parallel and introduced into the left gap, a resistance of 3Ω is introduced into the right-gap to get null point at 40cm from left end. The product of $R_1 R_2$ is $\text{_____}\Omega^2$
22. A particle of mass 100 g is projected at time $t = 0$ with a speed 20 ms^{-1} at an angle 45° to the horizontal as given in the figure. The magnitude of the angular momentum of the particle about the starting point at time $t = 2\text{ s}$ is found to be $\sqrt{K}\text{ kg m}^2/\text{s}$. The value of K is _____ . (Take $g = 10\text{ ms}^{-2}$)



23. In an experiment of measuring the refractive index of a glass slab using travelling microscope in physics lab, a student measures real thickness of the glass slab as 5.25 mm and apparent thickness of the glass slab at 5.00 mm . Travelling microscope has 20 divisions in one cm on main scale and 50 divisions on Vernier scale is equal to 49 divisions on main scale. The estimated uncertainty in the measurement of refractive index of the slab is $\frac{x}{10} \times 10^{-3}$, where x is _____
24. For a charged spherical ball, electrostatic potential inside the ball varies with r as $V = 2ar^2 + b$. Here, a and b are constant and r is the distance from the center. The volume charge density inside the ball is $-\lambda a\epsilon$. The value of λ is _____ . $\epsilon =$ permittivity of medium.
25. A car is moving on a circular path of radius 600 m such that the magnitudes of the tangential acceleration and centripetal acceleration are equal. The time taken by the car to complete first quarter of revolution, if it is moving with an initial speed of 54 km/hr is $t(1 - e^{-\pi/2})\text{ s}$. The value of t is _____ .
26. An inductor of inductance $2\mu\text{H}$ is connected in series with a resistance, a variable capacitor and an AC source of frequency 7 kHz . The value of capacitance for which maximum current is drawn into the circuit is $\frac{1}{x}\text{ F}$, where the value of x is _____ . (Take $\pi = \frac{22}{7}$)
27. A metal block of base area 0.20 m^2 is placed on a table, as shown in figure. A liquid film of thickness 0.25 mm is inserted between the block and the table. The block is pushed by a horizontal force of 0.1 N and moves with a constant speed. If the viscosity of the liquid is $5.0 \times 10^{-3}\text{ Pl}$, the speed of block is $\text{_____} \times 10^{-3}\text{ m/s}$.



28. A particle of mass 250 g executes a simple harmonic motion under a periodic force $F = (-25x)$ N. The particle attains a maximum speed of 4m/s during its oscillation. The amplitude of the motion is _____ cm.
29. Unpolarised light is incident on the boundary between two dielectric media, whose dielectric constants are 2.8 (medium – 1) and 6.8 (medium –2), respectively. To satisfy the condition, so that the reflected and refracted rays are perpendicular to each other, the angle of incidence should be $\tan^{-1}\left(1 + \frac{10}{\theta}\right)^{\frac{1}{2}}$ the value of θ is _____. (Given for dielectric media, $\mu_r = 1$)
30. A null point is found at 200 cm in potentiometer when cell in secondary circuit is shunted by 5Ω . When a resistance of 15Ω is used for shunting null point moves to 300 cm. The internal resistance of the cell is _____ Ω .

CHEMISTRY**Section - A (Single Correct Answer)**

31. Given below are two statements :
- Statement I :** The decrease in first ionization enthalpy from B to Al is much larger than that from Al to Ga.
- Statement II :** The d-orbitals in Ga are completely filled.
- In the light of the above statements, choose the most appropriate answer from the options given below.
- (A) Statement I is incorrect but statement II is correct.
- (B) Both the statements I and II are correct
- (C) Statement I is correct but statement II is incorrect
- (D) Both the statements I and II are incorrect
32. Correct order of spin only magnetic moment of the following complex ions is :
- [Given : At. No. – Fe : 26, Co : 27]
- (A) $[\text{FeF}_6]^{3-} > [\text{CoF}_6]^{3-} > [\text{Co}(\text{C}_2\text{O}_4)_3]^{3-}$ (B) $[\text{Co}(\text{C}_2\text{O}_4)_3]^{3-} > [\text{CoF}_6]^{3-} > [\text{FeF}_6]^{3-}$
- (C) $[\text{FeF}_6]^{3-} > [\text{Co}(\text{C}_2\text{O}_4)_3]^{3-} > [\text{CoF}_6]^{3-}$ (D) $[\text{CoF}_6]^{3-} > [\text{FeF}_6]^{3-} > [\text{Co}(\text{C}_2\text{O}_4)_3]^{3-}$

33. Match List-I and List-II.

List-I

- A. Osmosis
B. Reverse osmosis
C. Electro osmosis
D. Electrophoresis

List-II

- I. Solvent molecules pass through semi permeable membrane towards solvent side.
II. Movement of charged colloidal particles under the influence of applied electric potential towards oppositely charged electrodes.
III. Solvent molecules pass through semi per-meable membrane towards solution side.
IV. Dispersion medium moves in an electric field.

Choose the correct answer from the options given below.

- (A) A-I, B-III, C-IV, D-II (B) A-III, B-I, C-IV, D-II
(C) A-III, B-I, C-II, D-IV (D) A-I, B-III, C-II, D-IV

34. The set of **correct** statements is :

- Manganese exhibits +7 oxidation state in its oxide.
- Ruthenium and Osmium exhibit +8 oxidation in their oxides.
- Sc shows +4 oxidation state which is oxidizing in nature.
- Cr shows oxidising nature in +6 oxidation state.

(A) (ii) and (iii) (B) (i), (ii) and (iv) (C) (i) and (iii) (D) (ii), (iii) and (iv)

35. Match List-I and List-II.

List-I	List-II
A. Elastomeric polymer	I. Urea formaldehyde resin
B. Fibre polymer	II. Polystyrene
C. Thermosetting polymer	III. Polyester
D. Thermoplastic polymer	IV. Neoprene

Choose the correct answer from the options given below.

(A) A-II, B-III, C-I, D-IV

(B) A-II, B-I, C-IV, D-III

(C) A-IV, B-III, C-I, D-II

(D) A-IV, B-I, C-III, D-II

36. An indicator 'X' is used for studying the effect of variation in concentration of iodide on the rate of reaction of iodide ion with H_2O_2 at room temp. The indicator 'X' forms blue colored complex with compound 'A' present in the solution. The indicator 'X' and compound 'A' respectively are

(A) Starch and iodine

(B) Methyl orange and H_2O_2

(C) Starch and H_2O_2

(D) Methyl orange and iodine

37. A doctor prescribed the drug Equanil to a patient. The patient was likely to have symptoms of which disease ?

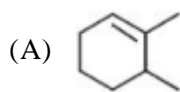
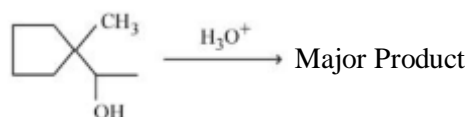
(A) Stomach ulcers

(B) Hyperacidity

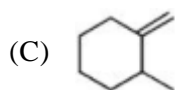
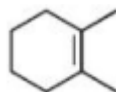
(C) Anxiety and stress

(D) Depression and hypertension

38. Find out the major product for the following reaction.



(B)



(D)



39. The one giving maximum number of isomeric alkenes on dehydrohalogenation reaction is [excluding rearrangement]

(A) 1-Bromo-2-methylbutane

(B) 2-Bromopropane

(C) 2-Bromopentane

(D) 2-Bromo-3,3-dimethylpentane

40. When a hydrocarbon A undergoes combustion in the presence of air, it requires 9.5 equivalents of oxygen and produces 3 equivalents of water. What is the molecular formula of A ?

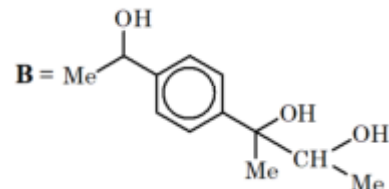
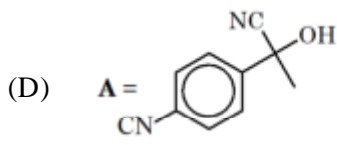
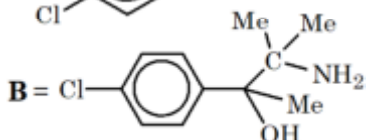
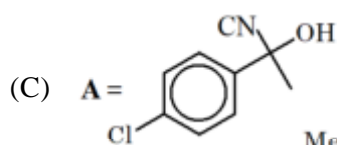
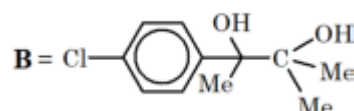
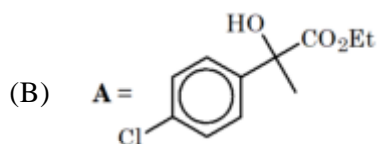
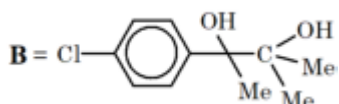
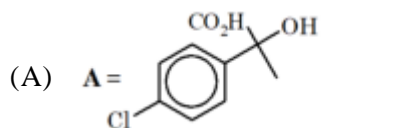
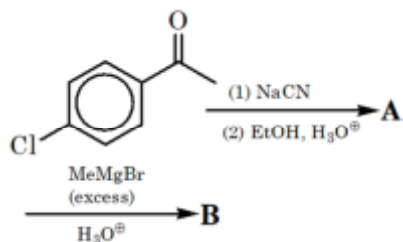
(A) C_8H_6

(B) C_9H_9

(C) C_6H_6

(D) C_9H_6

41. Find out the major products from the following reaction sequence.



42. According to MO theory the bond orders for O_2^{2-} , CO and NO^+ respectively, are

- (A) 1, 3 and 3 (B) 1, 3 and 2 (C) 1, 2 and 3 (D) 2, 3 and 3

43. A solution of CrO_5 in amyl alcohol has a _____ colour.

- (A) Green (B) Orange-Red (C) Yellow (D) Blue

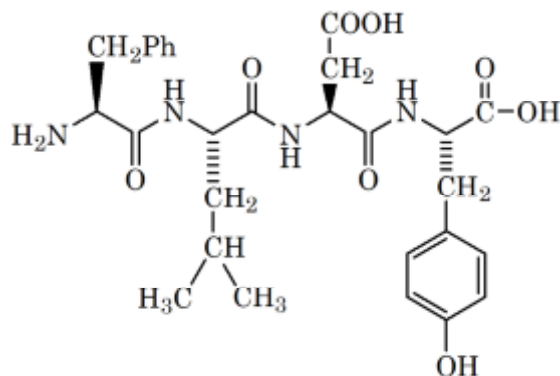
44. The concentration of dissolved Oxygen in water for growth of fish should be more than X ppm and Biochemical Oxygen Demand in clean water should be less than Y ppm. X and Y in ppm are, respectively.

- (A) X = 6, Y = 5 (B) X = 4, Y = 8 (C) X = 4, Y = 15 (D) X = 6, Y = 12

45. Reaction of propanamide with Br_2 / KOH (aq) produces :

- (A) Ethylnitrile (B) Propylamine (C) Propanenitrile (D) Ethylamine

46. Following tetrapeptide can be represented as



[F, L, D, Y, I, Q, P are one letter codes for amino acids]

- (A) FIQY (B) FLDY (C) YQLF (D) PLDY

47. Which of the following relations are **correct** ?

A. $\Delta U = q + p\Delta V$

B. $\Delta G = \Delta H - T\Delta S$

C. $\Delta S = \frac{q_{rev}}{T}$

D. $\Delta H = \Delta U - \Delta nRT$

Choose the **most appropriate** answer from the options given below.

- (A) C and D only (B) B and C only (C) A and B only (D) B and D only

48. The major component of which of the following ore is sulphide based mineral ?

- (A) Calamine (B) Siderite (C) Sphalerite (D) Malachite

49. Given below are two statements :

Statement I : Nickel is being used as the catalyst for producing syn gas and edible fats.

Statement II : Silicon forms both electron rich and electron deficient hydrides.

In the light of the above statements, choose the most appropriate answer from the options given below.

- (A) Both the statements I and II are correct
 (B) Statement I is incorrect but statement II is correct
 (C) Both the statements I and II are incorrect
 (D) Statement I is correct but statement II is incorrect

50. Match List I with List II.

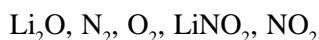
List I	List II
A. van't Hoff factor, i	I. Cryoscopic constant
B. k_f	II. Isotonic solutions
C. Solutions with same osmotic pressure	III. $\frac{\text{Normal molar mass}}{\text{Abnormal molar mass}}$
D. Azeotropes	IV. Solutions with same composition of vapour above it

Choose the correct answer from the options given below.

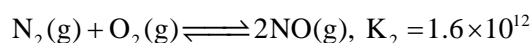
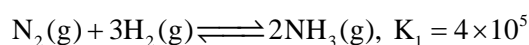
- (A) A-III, B-I, C-II, D-IV (B) A-III, B-II, C-I, D-IV
 (C) A-III, B-I, C-IV, D-II (D) A-I, B-III, C-II, D-IV

SECTION - B

51. On heating, LiNO_3 gives how many compounds among the following ?



52. At 298 K



62. Shortest distance between the lines $\frac{x-1}{2} = \frac{y+8}{-7} = \frac{z-4}{5}$ and $\frac{x-1}{2} = \frac{y-2}{1} = \frac{z-6}{-3}$ is
- (A) $2\sqrt{3}$ (B) $4\sqrt{3}$ (C) $3\sqrt{3}$ (D) $5\sqrt{3}$
63. If $\vec{a} = \hat{i} + 2\hat{k}$, $\vec{b} = \hat{i} + \hat{j} + \hat{k}$, $\vec{c} = 7\hat{i} - 3\hat{j} + 4\hat{k}$, $\vec{r} \times \vec{b} + \vec{b} \times \vec{c} = \vec{0}$ and $\vec{r} \cdot \vec{a} = 0$ then $\vec{r} \cdot \vec{c}$ is equal to :
- (A) 34 (B) 12 (C) 36 (D) 30
64. Let $S = \{w_1, w_2, \dots\}$ be the sample space associated to a random experiment. Let $P(w_n) = \frac{P(w_{n-1})}{2}$, $n \geq 2$.
Let $A = \{2k + 3\ell; k, \ell \in \mathbb{N}\}$ and $B = \{w_n; n \in A\}$. Then $P(B)$ is equal to :
- (A) $\frac{3}{32}$ (B) $\frac{3}{64}$ (C) $\frac{1}{16}$ (D) $\frac{1}{32}$
65. The value of the integral $\int_1^2 \left(\frac{t^4 + 1}{t^6 + 1} \right) dt$ is :
- (A) $\tan^{-1} \frac{1}{2} + \frac{1}{3} \tan^{-1} 8 - \frac{\pi}{3}$ (B) $\tan^{-1} 2 - \frac{1}{3} \tan^{-1} 8 + \frac{\pi}{3}$
(C) $\tan^{-1} 2 + \frac{1}{3} \tan^{-1} 8 - \frac{\pi}{3}$ (D) $\tan^{-1} \frac{1}{2} - \frac{1}{3} \tan^{-1} 8 + \frac{\pi}{3}$
66. Let K be the sum of the coefficients of the odd powers of x in the expansion of $(1+x)^{99}$. Let 'a' be the middle term in the expansion of $\left(2 + \frac{1}{\sqrt{2}}\right)^{200}$. If $\frac{{}^{200}C_{99}K}{n} = \frac{2^\ell m}{n}$, where m and n are odd numbers, then the ordered pair (ℓ, n) is equal to :
- (A) (50, 51) (B) (51, 99) (C) (50, 101) (D) (51, 101)
67. Let f and g be twice differentiable functions on \mathbb{R} such that
 $f''(x) = g''(x) + 6x$
 $f'(1) = 4g'(1) - 3 = 9$
 $f(2) = 3g(2) = 12$
 Then which of the following is NOT true ?
- (A) $g(-2) - f(-2) = 20$
 (B) If $-1 < x < 2$, then $|f(x) - g(x)| < 8$
 (C) $|f'(x) - g'(x)| < 6 \Rightarrow -1 < x < 11$
 (D) There exists $x_0 \in \left(1, \frac{3}{2}\right)$ such that $f(x_0) = g(x_0)$
68. The set of values of $t \in \mathbb{R}$, for which the matrix $\begin{bmatrix} e^t & e^t(\sin t - 2\cos t) & e^{-t}(-2\sin t - \cos t) \\ e^t & e^{-t}(2\sin t + \cos t) & e^{-t}(\sin t - 2\cos t) \\ e^t & e^{-t}\cos t & e^{-t}\sin t \end{bmatrix}$ is invertible,
- is

- (A) $\left\{(2k+1)\frac{\pi}{2}, k \in \mathbb{Z}\right\}$ (B) $\left\{k\pi + \frac{\pi}{4}, k \in \mathbb{Z}\right\}$
 (C) $\{k\pi, k \in \mathbb{Z}\}$ (D) \mathbb{R}

69. The area of the region $A = \left\{(x, y) : |\cos x - \sin x| \leq y \leq \sin x, 0 \leq x \leq \frac{\pi}{2}\right\}$

- (A) $1 - \frac{3}{\sqrt{2}} + \frac{4}{\sqrt{5}}$ (B) $\sqrt{5} + 2\sqrt{2} - 4.5$ (C) $\frac{3}{\sqrt{5}} - \frac{3}{\sqrt{2}} + 1$ (D) $\sqrt{5} - 2\sqrt{2} + 1$

70. The set of all values of λ for which the equation $\cos^2 2x - 2 \sin^4 x - 2 \cos^2 x = \lambda$

- (A) $[-2, -1]$ (B) $\left[-2, -\frac{3}{2}\right]$ (C) $\left[-1, -\frac{1}{2}\right]$ (D) $\left[-\frac{3}{2}, -1\right]$

71. The letters of the word OUGHT are written in all possible ways and these words are arranged as in a dictionary, in a series. Then the serial number of the word TOUGH is :

- (A) 89 (B) 84 (C) 86 (D) 79

72. The plane $2x - y + z = 4$ intersects the line segment joining the points $A(a, -2, 4)$ and $B(2, b, -3)$ at the point C in the ratio $2 : 1$ and the distance of the point C from the origin is $\sqrt{5}$. If $ab < 0$ and P is the point $(a - b, b, 2b - a)$ then CP^2 is equal to :

- (A) $\frac{17}{3}$ (B) $\frac{16}{3}$ (C) $\frac{73}{3}$ (D) $\frac{97}{3}$

73. Let $\vec{a} = 4\hat{i} + 3\hat{j}$ and $\vec{b} = 3\hat{i} - 4\hat{j} + 5\hat{k}$ and \vec{c} is a vector that $\vec{c} \cdot (\vec{a} \times \vec{b}) + 25 = 0$, $\vec{c} \cdot (\hat{i} + \hat{j} + \hat{k}) = 4$ and projection of \vec{c} on \vec{a} is 1, then the projection of \vec{c} on \vec{b} equals :

- (A) $\frac{5}{\sqrt{2}}$ (B) $\frac{1}{5}$ (C) $\frac{1}{\sqrt{2}}$ (D) $\frac{3}{\sqrt{2}}$

74. If the lines $\frac{x-1}{1} = \frac{y-2}{2} = \frac{z+3}{1}$ and $\frac{x-a}{2} = \frac{y+2}{3} = \frac{z-3}{1}$ intersects at point P , then the distance of the point P from the plane $z = a$ is :

- (A) 16 (B) 28 (C) 10 (D) 22

75. The value of the integral $\int_{1/2}^2 \frac{\tan^{-1} x}{x} dx$ is equal to

- (A) $\pi \log_e 2$ (B) $\frac{1}{2} \log_e 2$ (C) $\frac{\pi}{4} \log_e 2$ (D) $\frac{\pi}{2} \log_e 2$

76. If the tangent at a point P on the parabola $y^2 = 3x$ is parallel to the line $x + 2y = 1$ and the tangents at the points Q and R on the ellipse $\frac{x^2}{4} + \frac{y^2}{1} = 1$ are perpendicular to the line $x - y = 2$, then the area of the triangle PQR is :

- (A) $\frac{9}{\sqrt{5}}$ (B) $5\sqrt{3}$ (C) $\frac{3}{2}\sqrt{5}$ (D) $3\sqrt{5}$

77. Let $y = y(x)$ be the solution of the differential equation $x(\log_e x) \frac{dy}{dx} + y = x^2 \log_e x$, ($x > 1$). If $y(2) = 2$, then $y(e)$ is equal to
- (A) $\frac{4+e^2}{4}$ (B) $\frac{1+e^2}{4}$ (C) $\frac{2+e^2}{2}$ (D) $\frac{1+e^2}{2}$
78. The number of 3 digit numbers, that are divisible by either 3 or 4 but not divisible by 48, is
- (A) 472 (B) 432 (C) 507 (D) 400
79. Let R be a relation defined on \mathbb{N} as $a R b$ is $2a + 3b$ is a multiple of 5; $a, b \in \mathbb{N}$. Then R is
- (A) not reflexive
(B) transitive but not symmetric
(C) symmetric but not transitive
(D) an equivalence relation
80. Consider a function $f : \mathbb{N} \rightarrow \mathbb{R}$, satisfying $f(1) + 2f(2) + 3f(3) + \dots + xf(x) = x(x+1)f(x)$; $x \geq 2$ with $f(1) = 1$. Then $\frac{1}{f(2022)} + \frac{1}{f(2028)}$ is equal to :
- (A) 8200 (B) 8000 (C) 8400 (D) 8100

SECTION - B

81. The total number of 4-digit numbers whose greatest common divisor with 54 is 2, is _____.
82. A triangle is formed by the tangents at the point $(2, 2)$ on the curves $y^2 = 2x$ and $x^2 + y^2 = 4x$, and the line $x + y + 2 = 0$. If r is the radius of its circumcircle, then r^2 is equal to _____.
83. A circle with centre $(2, 3)$ and radius 4 intersects the line $x + y = 3$ at the points P and Q . If the tangents at P and Q intersect at the point $S(\alpha, \beta)$, then $4\alpha - 7\beta$ is equal to _____.
84. Let $a_1 = b_1 = 1$ and $a_n = a_{n-1} + (n-1)$, $b_n = b_{n-1} + a_{n-1}$, $\forall n \geq 2$. If $S = \sum_{n=1}^{10} \frac{b_n}{2^n}$ and $T = \sum_{n=1}^8 \frac{n}{2^{n-1}}$, then $2^7(2S - T)$ is equal to _____.
85. If the equation of the normal to the curve $y = \frac{x-a}{(x+b)(x-2)}$ at the point $(1, -3)$ is $x - 4y = 13$, then the value of $a + b$ is equal to _____.
86. Let A be a symmetric matrix such that $|A| = 2$ and $\begin{bmatrix} 2 & 1 \\ 3 & \frac{3}{2} \end{bmatrix} A = \begin{bmatrix} 1 & 2 \\ \alpha & \beta \end{bmatrix}$. If the sum of the diagonal elements of A is s , then $\frac{\beta s}{\alpha^2}$ is equal to _____.
87. Let $\{a_k\}$ and $\{b_k\}$, $k \in \mathbb{N}$, be two G.P.s with common ratio r_1 and r_2 respectively such that $a_1 = b_1 = 4$ and $r_1 < r_2$. Let $c_k = a_k + b_k$, $k \in \mathbb{N}$. If $c_2 = 5$ and $c_3 = \frac{13}{4}$ then $\sum_{k=1}^{\infty} c_k - (12a_6 + 8b_4)$ is equal to _____.

88. Let $X = \{11, 12, 13, \dots, 40, 41\}$ and $Y = \{61, 62, 63, \dots, 90, 91\}$ be the two sets of observations. If \bar{x} and \bar{y} are their respective means and σ^2 is the variance of all the observations in $X \cup Y$, then $|\bar{x} + \bar{y} - \sigma^2|$ is equal to _____.

89. Let $\alpha = 8 - 14i$, $A = \left\{ z \in \mathbb{C} : \frac{\alpha z - \bar{\alpha} \bar{z}}{z^2 - (\bar{z})^2 - 112i} = 1 \right\}$ and $B = \{z \in \mathbb{C} : |z + 3i| = 4\}$.

Then $\sum_{z \in A \cap B} (\operatorname{Re} z - \operatorname{Im} z)$ is equal to _____.

90. Let $\alpha_1, \alpha_2, \dots, \alpha_7$ be the roots of the equation $x^7 + 3x^5 - 13x^3 - 15x = 0$ and $|\alpha_1| \geq |\alpha_2| \geq \dots \geq |\alpha_7|$. Then $\alpha_1 \alpha_2 - \alpha_3 \alpha_4 + \alpha_5 \alpha_6$ is equal to _____.

□ □ □

29-January-2023 (Evening Batch) : JEE Main Paper

ANSWER KEY**Physics**

Single Choice Correct

1. A	2. B	3. C	4. B	5. D
6. B	7. D	8. A	9. B	10. C
11. B	12. C	13. B	14. B	15. A
16. A	17. A	18. D	19. B	20. B

Numerical Value

21. 30	22. 800	23. 41	24. 12	25. 40
26. 3872	27. 25	28. 40	29. 7	30. 5

Chemistry

Single Choice Correct

31. B	32. A	33. B	34. B	35. C
36. A	37. D	38. B	39. C	40. A
41. B	42. A	43. D	44. A	45. D
46. B	47. B	48. C	49. D	50. A

Numerical Value

51. 3	52. 4	53. 2	54. 4	55. 200
56. 4	57. 36	58. 270	59. 17	60. 15

Mathematics

Single Choice Correct

61. B	62. B	63. A	64. B	65. C
66. C	67. B	68. D	69. D	70. D
71. A	72. A	73. A	74. B	75. D
76. D	77. A	78. B	79. D	80. D

Numerical Value

81. 3000	82. 10	83. 11	84. 461	85. 4
86. 5	87. 9	88. 603	89. 14	90. 9